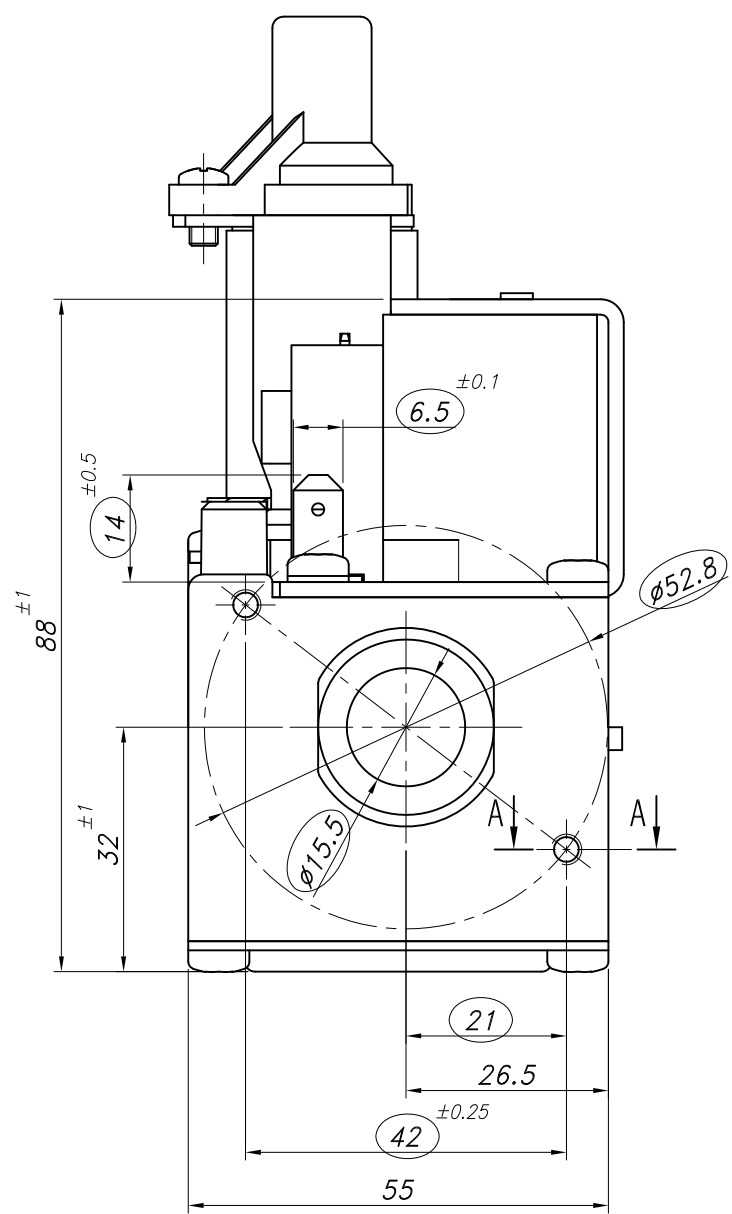
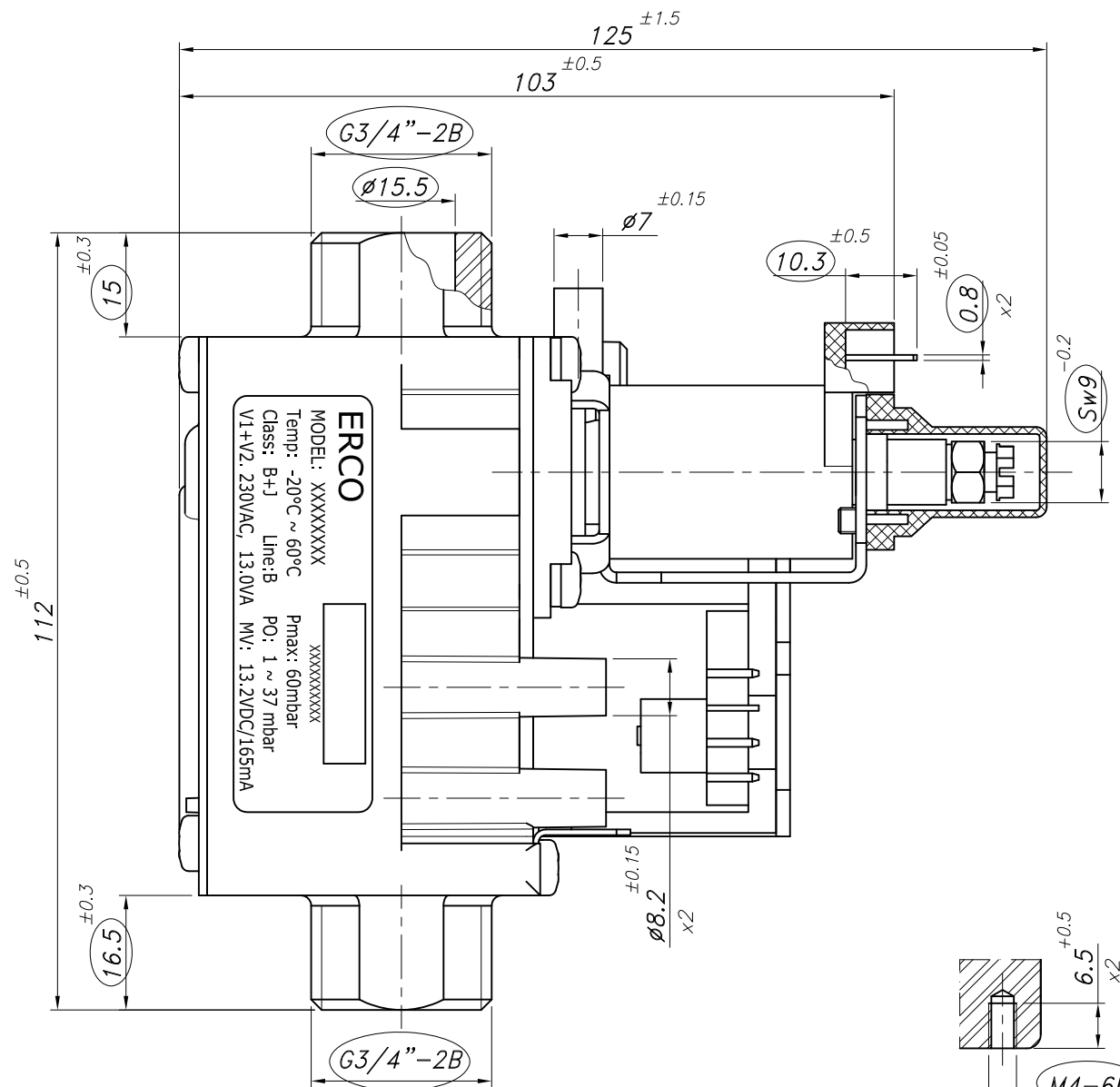
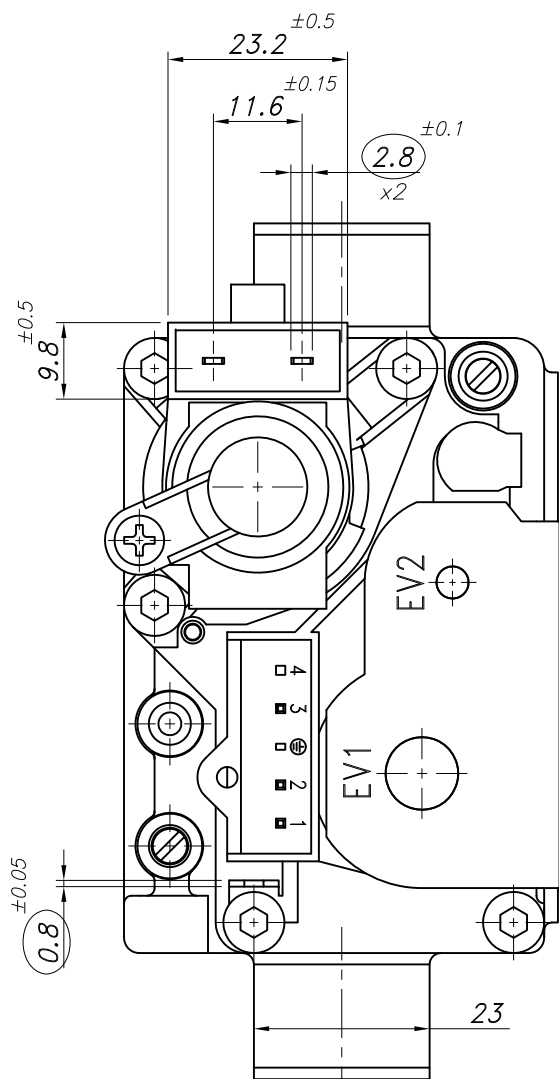


فنار عملکرد: 3 bar ± 0.3

Technical Specification		Yes	No													
Linear Dimensions Tolerances According to ISO 2768-1				Date	Name	Sign.	Scale: 1:1									
Nom. Size (mm)	over up to	0.5	3	6	30	120	400		1000	2000	Designed by	Mohammadi	Rev: 0			
○ Fine		± 0.05	± 0.05	± 0.1	± 0.15	± 0.2	± 0.3		± 0.5		Drawn by	97/09/11	Ghorbani	M.S.H	Technical Grade:	Performance A
● Medium		± 0.1	± 0.1	± 0.2	± 0.3	± 0.5	± 0.8		± 1.2		Checked by		Soleymani		Sh 1 Of 1	Product Name.:
○ Coarse		---	± 0.2	± 0.5	± 0.8	± 1.2	± 2	± 3		Approved by		Aliyari		Weight: - gr	Title:	شیر اطمینان
Fillet&Chamfer Dimensions Tolerances According to ISO 2768-1				Validated by	Aliyari		Unit: mm									
Nom. Size (mm)		0.5 up to 3	Over 3 up to 6	Over 6	General Geometric Tolerances in Accordance with: ISO 2768 - mx											
● Fine\Medium		± 0.2	± 0.5	± 1	Surface Texture in Accordance with: ISO 1302	✓	12.5	3.2	0.8	Material:	Assembly	Mat.Expert		Sheet: A2	Material No.:	15003487
○ Coarse		± 0.4	± 1	± 2											Old Material No.:	B-
Angular Dimensions Tolerances According to ISO 2768-1																
Nom. Size (mm)	Over 0 up to 10	Over 10 up to 50	Over 50 up to 120	Over 120 up to 400	Over 400											
● Fine\Medium	$\pm 1^\circ$	$\pm 0'30''$	$\pm 0'20''$	$\pm 0'10''$	$\pm 0'5''$											
○ Coarse	$\pm 1'30''$	$\pm 1^\circ$	$\pm 0'30''$	$\pm 0'15''$	$\pm 0'10''$											
Description	No.	Status	Modifications				Date									
	2															
1																

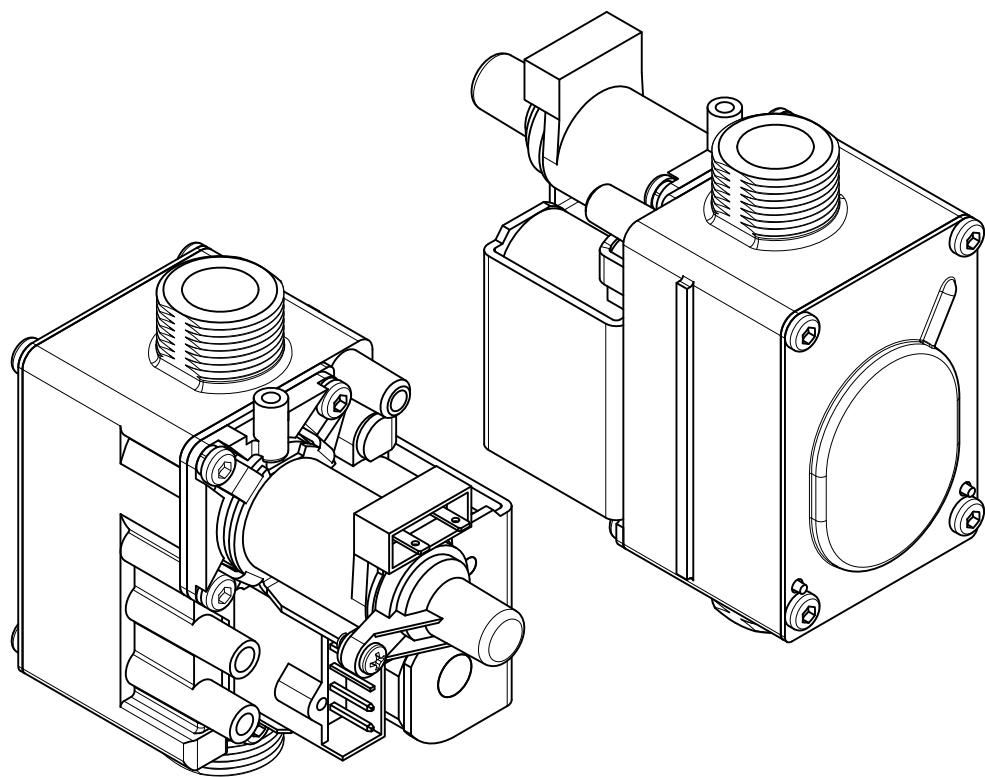


Section A-A

View F

(Technical requirement):

1. Body material:ADC12
2. Temperature range NG: -20°C~+60°C LPG: 0°C~+60°C
3. Max. gas inlet pressure:60mbar
4. Rated flow rate:with the shutoff and MV valve fully open, at a pressure drop of 5mbar,flow rate Q>4.3m3/h with air
5. Class of regulator valve:class B(EN88)
6. Leak-tightness: Internal EV1<30ml/h pressure 150mbar ± 6mbar EV2<30ml/h pressure 150mbar ± 6mbar External <30ml/h pressure 150mbar
7. Close time: open ≤1s close≤1s
8. Proportional valve electrical performance: 132VDC/165mA
9. Shutoff valve electrical:AC220V Min. open voltage: ≤187V DC Max. close voltage: ≥33V DC
10. Life cycle of shutoff valve:>500000cycles
11. Temperature rise of shutoff valve:<75K
12. Mounting position:Vertical or horizontal ±5°
13. Degree of protection:IP44.



Technical Specification		Yes	No			Date	Name	Sign.	Scale: 1:1																																		
Linear Dimensions Tolerances According to ISO 2768-1 <table border="1"> <tr> <th>Nom. Size (mm)</th> <th>over up to</th> <th>0.5</th> <th>3</th> <th>6</th> <th>30</th> <th>120</th> <th>400</th> <th>1000</th> </tr> <tr> <td>○ Fine</td> <td></td> <td>±0.05</td> <td>±0.05</td> <td>±0.1</td> <td>±0.15</td> <td>±0.2</td> <td>±0.3</td> <td>±0.5</td> </tr> <tr> <td>● Medium</td> <td></td> <td>±0.1</td> <td>±0.1</td> <td>±0.2</td> <td>±0.3</td> <td>±0.5</td> <td>±0.8</td> <td>±1.2</td> </tr> <tr> <td>○ Coarse</td> <td></td> <td>---</td> <td>±0.2</td> <td>±0.5</td> <td>±0.8</td> <td>±1.2</td> <td>±2</td> <td>±3</td> </tr> </table>				Nom. Size (mm)	over up to	0.5	3	6	30	120	400	1000	○ Fine		±0.05	±0.05	±0.1	±0.15	±0.2	±0.3	±0.5	● Medium		±0.1	±0.1	±0.2	±0.3	±0.5	±0.8	±1.2	○ Coarse		---	±0.2	±0.5	±0.8	±1.2	±2	±3	Designed by	Mohammadi	Rev: 0	
Nom. Size (mm)	over up to	0.5	3	6	30	120	400	1000																																			
○ Fine		±0.05	±0.05	±0.1	±0.15	±0.2	±0.3	±0.5																																			
● Medium		±0.1	±0.1	±0.2	±0.3	±0.5	±0.8	±1.2																																			
○ Coarse		---	±0.2	±0.5	±0.8	±1.2	±2	±3																																			
Fillet&Chamfer Dimensions Tolerances According to ISO 2768-1 <table border="1"> <tr> <th>Nom. Size (mm)</th> <th>0.5 up to 3</th> <th>Over 3 up to 6</th> <th>Over 6</th> </tr> <tr> <td>● Fine\Medium</td> <td>±0.2</td> <td>±0.5</td> <td>±1</td> </tr> <tr> <td>○ Coarse</td> <td>±0.4</td> <td>±1</td> <td>±2</td> </tr> </table>				Nom. Size (mm)	0.5 up to 3	Over 3 up to 6	Over 6	● Fine\Medium	±0.2	±0.5	±1	○ Coarse	±0.4	±1	±2	Drawn by	97/11/23 Parniani	Technical Grade: Safety A																									
Nom. Size (mm)	0.5 up to 3	Over 3 up to 6	Over 6																																								
● Fine\Medium	±0.2	±0.5	±1																																								
○ Coarse	±0.4	±1	±2																																								
Angular Dimensions Tolerances According to ISO 2768-1 <table border="1"> <tr> <th>Nom. Size (mm)</th> <th>Over 0 up to 10</th> <th>Over 10 up to 50</th> <th>Over 50 up to 120</th> <th>Over 120 up to 400</th> <th>Over 400</th> </tr> <tr> <td>● Fine\Medium</td> <td>±1'</td> <td>±0'30"</td> <td>±0'20"</td> <td>±0'10"</td> <td>±0'5"</td> </tr> <tr> <td>○ Coarse</td> <td>±1'30"</td> <td>±1'</td> <td>±0'30"</td> <td>±0'15"</td> <td>±0'10"</td> </tr> </table>				Nom. Size (mm)	Over 0 up to 10	Over 10 up to 50	Over 50 up to 120	Over 120 up to 400	Over 400	● Fine\Medium	±1'	±0'30"	±0'20"	±0'10"	±0'5"	○ Coarse	±1'30"	±1'	±0'30"	±0'15"	±0'10"	Checked by	Soleymani	Sh 1 of 1																			
Nom. Size (mm)	Over 0 up to 10	Over 10 up to 50	Over 50 up to 120	Over 120 up to 400	Over 400																																						
● Fine\Medium	±1'	±0'30"	±0'20"	±0'10"	±0'5"																																						
○ Coarse	±1'30"	±1'	±0'30"	±0'15"	±0'10"																																						
General Geometric Tolerances in Accordance with: ISO 2768 - mK <table border="1"> <tr> <th>Surface Texture in Accordance with: ISO 1302</th> <th>✓</th> <th>12.5/√</th> <th>3.2/√</th> <th>0.8/√</th> </tr> </table>				Surface Texture in Accordance with: ISO 1302	✓	12.5/√	3.2/√	0.8/√	Approved by	Aliyari	Weight: - gr																																
Surface Texture in Accordance with: ISO 1302	✓	12.5/√	3.2/√	0.8/√																																							
Material: Assembly				Validated by	Aliyari	Unit: mm																																					
Material: Mat.Expert				Product Name: شوفاز Bita 22 Sealed		Title: شیر گاز Erco																																					
Material: Mat.Expert				Material No.: 15003580		Old Material No.: B-																																					
Description		No. Status		Modifications		Date																																					
2																																											
1																																											
						طبق شماره پروژه ۷۰۲ 97/11/23																																					

1

2

3

4

A

A

B

B

C

C

D

D

E

E

F

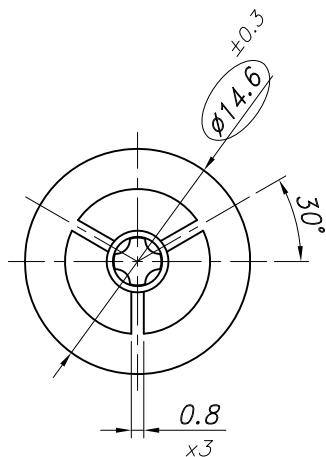
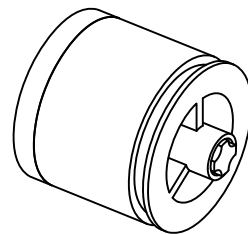
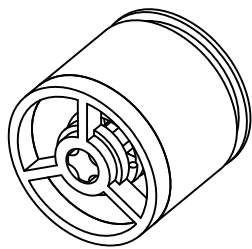
F

G

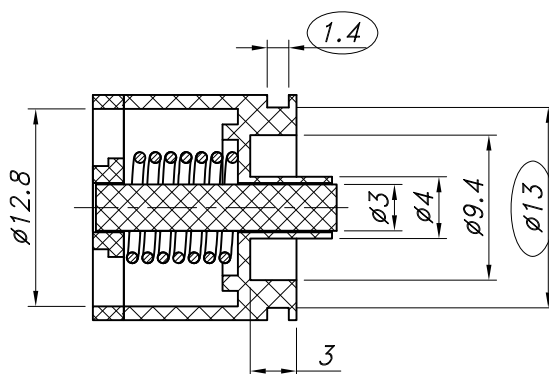
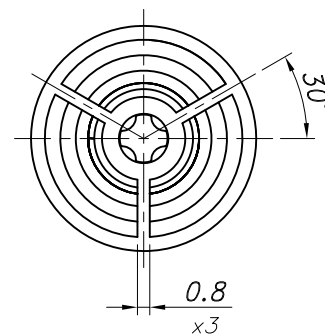
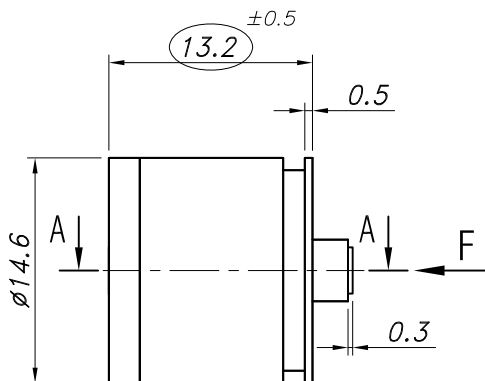
G

H

H




View F

Section A-A
Scale 2:1

Technical: 0.05 MPa, Flow ≤ 50 L/h
0.065 MPa, Flow ≥ 250 L/h

Technical Specification	Yes <input type="radio"/>	No <input checked="" type="radio"/>
-------------------------	---------------------------	-------------------------------------

Linear Dimensions Tolerances According to ISO 2768-1		Date	Name	Sign.	Scale: 2:1								
Nom. Size (mm)	over up to	0.5 3	3 6	6 30	30 120		120 400	400 1000	1000 2000	Designed by	Mohammadi	Rev: 0	
○ Fine		±0.05	±0.05	±0.1	±0.15	±0.2	±0.3	±0.5	Drawn by	99/03/18	Chorbani	M. GH	Technical Grade:
● Medium		±0.1	±0.1	±0.2	±0.3	±0.5	±0.8	±1.2	Checked by		Soleymani		Performance A
○ Coarse		---	±0.2	±0.5	±0.8	±1.2	±2	±3	Approved by		Aliyari		Sh 1 Of 1
Fillet&Chamfer Dimensions Tolerances According to ISO 2768-1		Validated by		Aliyari	Weight: - gr	Title: شیر یکطرفه بای پس 7m							
Nom. Size (mm)		0.5 up to 3	Over 3 up to 6	Over 6	Unit: mm								
● Fine\Medium		±0.2	±0.5	±1	Surface Texture in Accordance with: ISO 1302	Sheet: A4 Material No.: 15003921							
○ Coarse		±0.4	±1	±2									
Angular Dimensions Tolerances According to ISO 2768-1		Material:		Assembly	Mat.Expert Old Material No.: B-								
Nom. Size (mm)		Over 0 up to 10	Over 10 up to 50	Over 50 up to 120		Over 120 up to 400	Over 400						
● Fine\Medium		±1'	±0'30'	±0'20'	±0'10'	±0'5'							
○ Coarse		±1'30'	±1'	±0'30'	±0'15'	±0'10'							

Description	No. Status		Modifications	Date
	No.	Status		
2				
1				

1

2

3

4

1

2

3

4

5

6

A

A

B

B

C

C

D

D

E

E

F

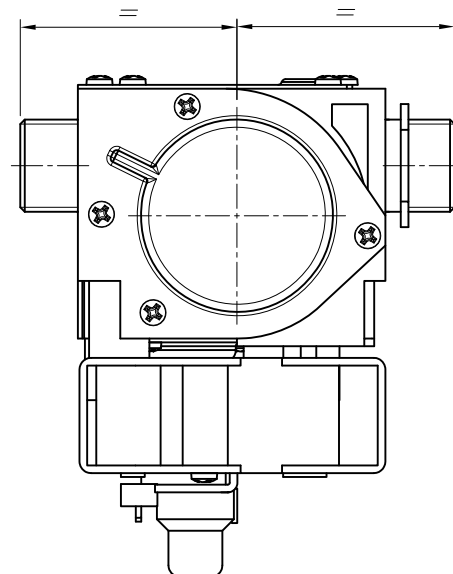
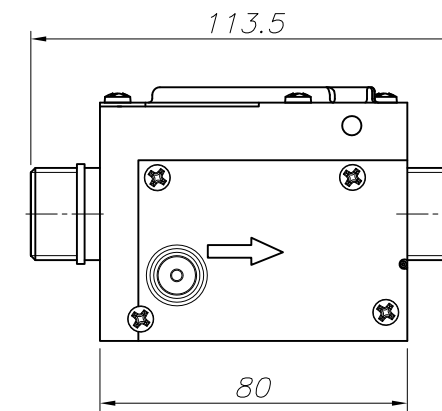
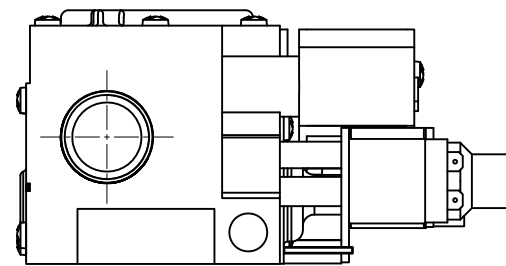
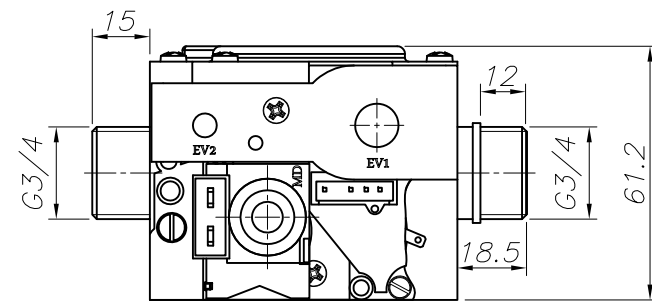
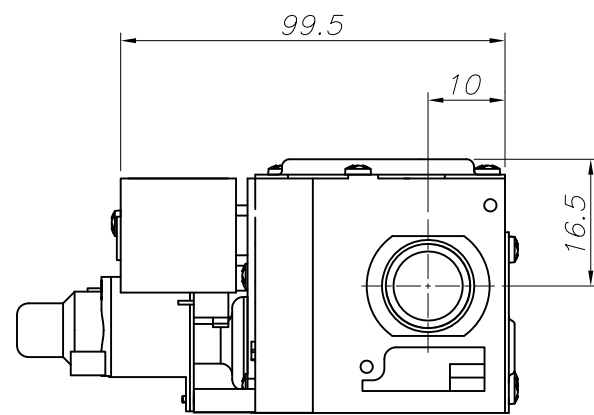
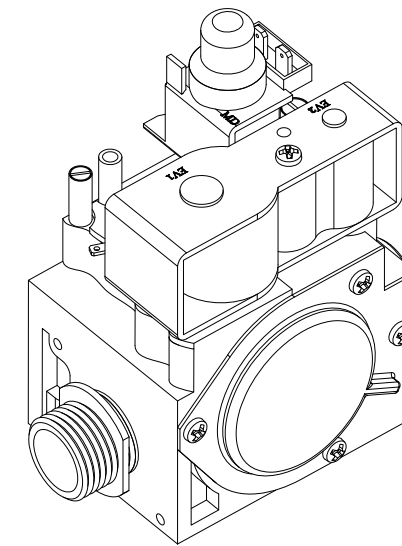
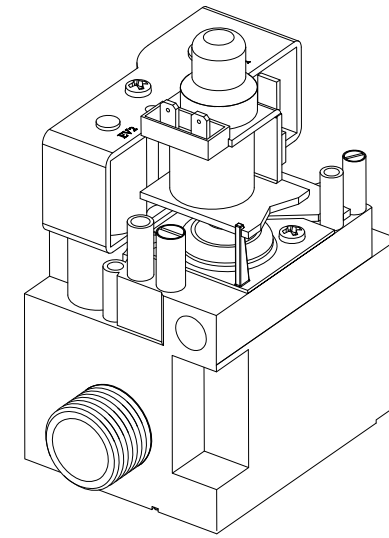
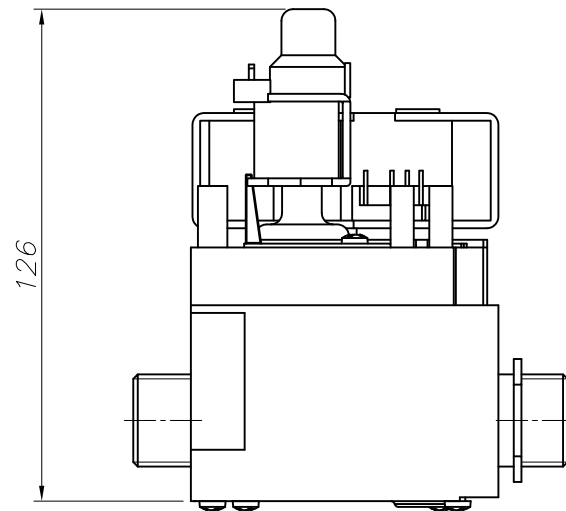
F


G

G

H

H



Linear Dimensions Tolerances According to ISO 2768-1		Date	Name	Sign.	Scale: 1:2	 BUTANE INDUSTRIAL Co.								
Nom. Size (mm)	over up to	0.5	3	6	30		120	400	1000	Designed by	Mostafaei	Rev: 0		
○ Fine		±0.05	±0.05	±0.1	±0.15	±0.2	±0.3	±0.5	Drawn by	92/03/04 Ghorbani	M. G.H	Grade: C		
● Medium		±0.1	±0.1	±0.2	±0.3	±0.5	±0.8	±1.2	Checked by	Sefidkhani	Qty: 1	Product Name.: شوفاز 24KI Venezia		
○ Coarse		---	±0.2	±0.5	±0.8	±1.2	±2	±3	Approve by	Aliyari	Sh 1 Of 1	Title: شیر گاز Sit845 جدید		
Fillet&Chamfer Dimensions Tolerances According to ISO 2768-1		General Geometric Tolerances in Accordance with: ISO 2768 - mK		Surface Texture in Accordance with: ISO 1302		Material: Assembly		Unit: mm		Sheet: A3		Dwg. No.: 70261020		
Nom. Size (mm)		0.5 up to 3	Over 3 up to 6	Over 6	✓	12.5/	3.2/	0.8/	Validate by	Hatami	Weight: -	Title: شیر گاز Sit845 جدید		
● Fine\Medium		±0.2	±0.5	±1	○	○	○	○	General Geometric Tolerances in Accordance with: ISO 2768 - mK		Unit: mm	Title: شیر گاز Sit845 جدید		
○ Coarse		±0.4	±1	±2	○	○	○	○	Surface Texture in Accordance with: ISO 1302		Sheet: A3	Dwg. No.: 70261020		
Angular Dimensions Tolerances According to ISO 2768-1		Material: Assembly		Mat.Expert		Standard No.: ---								
Nom. Size (mm)		Over 0 up to 10	Over 10 up to 50	Over 50 up to 120	Over 120 up to 400	Over 400								
● Fine\Medium		±1'	±0'30'	±0'20'	±0'10'	±0'5'								
○ Coarse		±1'30'	±1'	±0'30'	±0'15'	±0'10'								

Description	No. Status		Modifications	Date
	2			
1				